



Home & Garden

A local focus on real estate, gardening & home improvement



Interior paint colors take on the warm tones of nature's earthy palette

By HALLE REECE SMITH
for The Tribune's
Home & Garden section

When you think of spring 2008 interior paint colors, don't think of pale pastels like little girls' Easter dresses. This year's palette is bolder, earthier and a whole lot warmer.

"This spring you'll see sharp colors in contrast — sun-baked oranges and pomegranate martinis," says Gretchen Schaufler, founder of Devine Color Inc., a Portland-based company that distributes a line of luxury paints with a "yogurt-rich texture" through Miller Paint Co.

Schauffler says we'll also see a "fruit salad effect" with citrusy colors this spring, represented in the Devine Color line as Mango Tango, Lemon Drop, a deep Bon Vivant red, and also Mo' Pink and Gecko green.

"When Reese Witherspoon walked out in a lemon-wedge yellow gown at the Academy Awards, I thought, 'This is it.' We're past the fear of color now. People are ready to embrace it," Schaufler says.

"The trend is definitely toward brighter and bolder," says Janie Lowe, co-founder of Yolo Colorhouse, a Portland-based company known for its environmentally responsible, zero-volatile organic compound (VOC) paints.

"There is also a movement toward yellow, from light and bright to deeper gold. Yellow is a color of hope and optimism, which we all are thinking about right now."

You can find a range of yellows in the Yolo "grain" color family. Lowe and Yolo co-founder Virginia Young have a new addition to the grain family, Grain.07, which Lowe

**Bold
is
beautiful**

COURTESY OF DEVINE COLOR INC.

Pastels are out this spring where interior paint is concerned and bold colors from Devine Color; above, and Yolo Colorhouse, top right, are in. Deep, rich earth tones are also big this season.

describes as a "rich, buttery, golden squash color."

It pairs perfectly with the other color they've released, Petal.07, a rich purple-red that Lowe calls "a bright and luscious beet, yet still earthy."

Lowe says, "These colors would go well together in combination, or throw in Clay.03 for a spicy Moroccan feel. Or Leaf.05 (a green), or Clay.02 (an earthy, orangey tan). The possibilities are endless."

While the warm, bold spring colors look great in contrast with one another, they also can be contrasted with black or white, complemented with neutrals or paired with chocolate brown.

"A lot of clients are using chocolates and earthen colors on the darker side of a neutral," says Jennifer Leonard,

interior designer and owner of Nifelle Design.

"I'm also still seeing reddy-orange paprikas and tangerines. And teals and neutrals. Also rich, earthen golds are coming out," she says.

You can use rich brown as your base and then any of the spring colors with it because "these colors look fresh with chocolate," Leonard says.

"The person who already embraces color will enjoy the stark contrasts," Schaufler says. "But the person who is using Devine Mocha or Ale with lots of patinas or textures may want to introduce the brighter colors of spring in dishware and glassware."

As for other emerging colors, Leonard predicts iris blue will be big for spring.

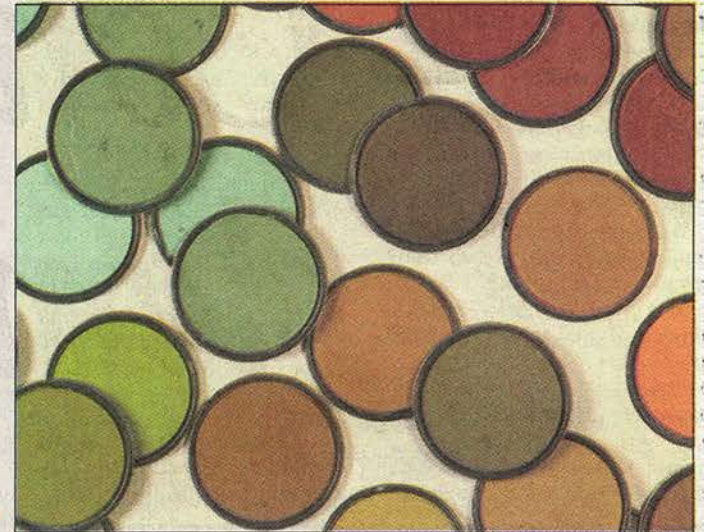
She describes it as "bluey

lavender, like a robin's egg blue with a touch of lavender in it" and she's seeing it in fabrics and furniture at interior design conferences.

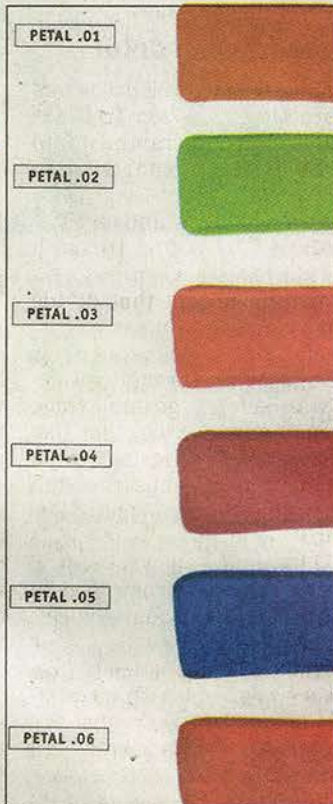
Schauffler says white will be a key player, especially in contrast with the brighter spring colors.

And Lowe is betting on blue-greens and dark, anchoring grays.

So if you're ready to move away from safe neutrals, 2008 interior colors will give you plenty of options to make your home bold and warm.



COURTESY OF YOLO COLORHOUSE



COURTESY OF YOLO COLORHOUSE

THE OVERLOOK

RIGHT WHERE YOU WANT TO BE

www.liveintheoverlook.com

Chris Bonner, Broker | The Hasson Company Realtors | 503-516-6912

FINGERTIP HANDLING,
**ROOMY
INTERIOR**

**DAVEY
organicare**

